

*Royalston Historic District Commission*  
*Royalston, Massachusetts, 01368*

Meeting Minutes

Date: January 19, 2012

Attendees: Peter, (chair), Celt, Ken, Pierre (secretary), Bob (late). All were active voters.

Peter opened the meeting at 7:45.

Minutes: The members read the minutes of December. Bob motioned to accept them as read. Ken seconded. All voted in favor, except Peter and Celt who abstained.

Correspondence:

- EBI Consulting sent a request for comments (see annex) under the Section 106 process about erecting a tower at 46 Warwick Rd. Pierre will answer after finding more about this project and about the process. It is clear to all that the HDC does not regulate vistas outside the District.
- The Select Board answered our October letter about the parking situation at the fire station. The commission was pleased to note that the situation has improved. No further action.
- Athol Daily News sent a \$40 bill about the Dec hearing for Mark Smith. Peter will handle it.

Internal matters

Bob reported that Clarence Rabideau, 127 Athol Rd, has expressed interest in rejoining the commission. He had a positive influence in the past. All were in agreement. Pierre remarked that Ken has been an alternate for a long time. The consensus was that Pierre would compose a letter to the Select Board to requests that Clarence be appointed as alternate and that Ken be appointed to Roger's former position. Peter will sign and send the letter.

Old business

Celt brought a new proposal about the planting near the Verizon cabinets (see annex). Money is an issue. Pierre will contact Verizon. Celt will talk to Keith Newton about helping. There was a short discussion about painting the cabinets; the paint may not last.

Celt also reported that Geoff Newton would be in touch about installing electrical panels at Bullock park (250<sup>th</sup> anniversary)

Meeting adjourned

Bob motioned to close the meeting. Ken seconded. Peter closed the meeting at 8:55 PM

Respectfully submitted,



Pierre A. Humblet,  
Secretary

January 16, 2012

Royalston Historic District Commission  
c/o Mr. Peter Kraniak  
PO Box 125  
Royalston, MA 01368  
Ph: (978) 249-7625  
[hdc@royalston-ma.gov](mailto:hdc@royalston-ma.gov)

**Subject: Invitation to Comment**  
Royalston  
46 Warwick Road, Royalston, Worcester County, Massachusetts  
EBI Project #61113916

Dear Mr. Kraniak:


Pursuant to Section 106 of the National Historic Preservation Act, the regulations promulgated thereunder and interagency agreements developed thereto, EBI Consulting, Inc. on behalf of Franklin Regional County of Government provides this notice of a proposed telecommunications facility installation at the address listed above.

EBI would like to inquire if you would be interested in commenting on this proposed project. Please refer to the attached project plans for complete details regarding this proposed project.

Please note that we are requesting your review of the attached information as part of the Section 106 process only and not as part of the local zoning process. We are only seeking comments related to the proposed project's potential effect to historic properties.

Please submit your comments regarding the proposed project's potential effect on historic properties to EBI Consulting, to my attention at 21 B Street, Burlington, MA 01803 or contact me via telephone at the number listed below. Please reference the EBI project number. We would appreciate your comments as soon as possible within the next 30 days. Please do not hesitate to contact me if you have any questions or concerns about the proposed project.

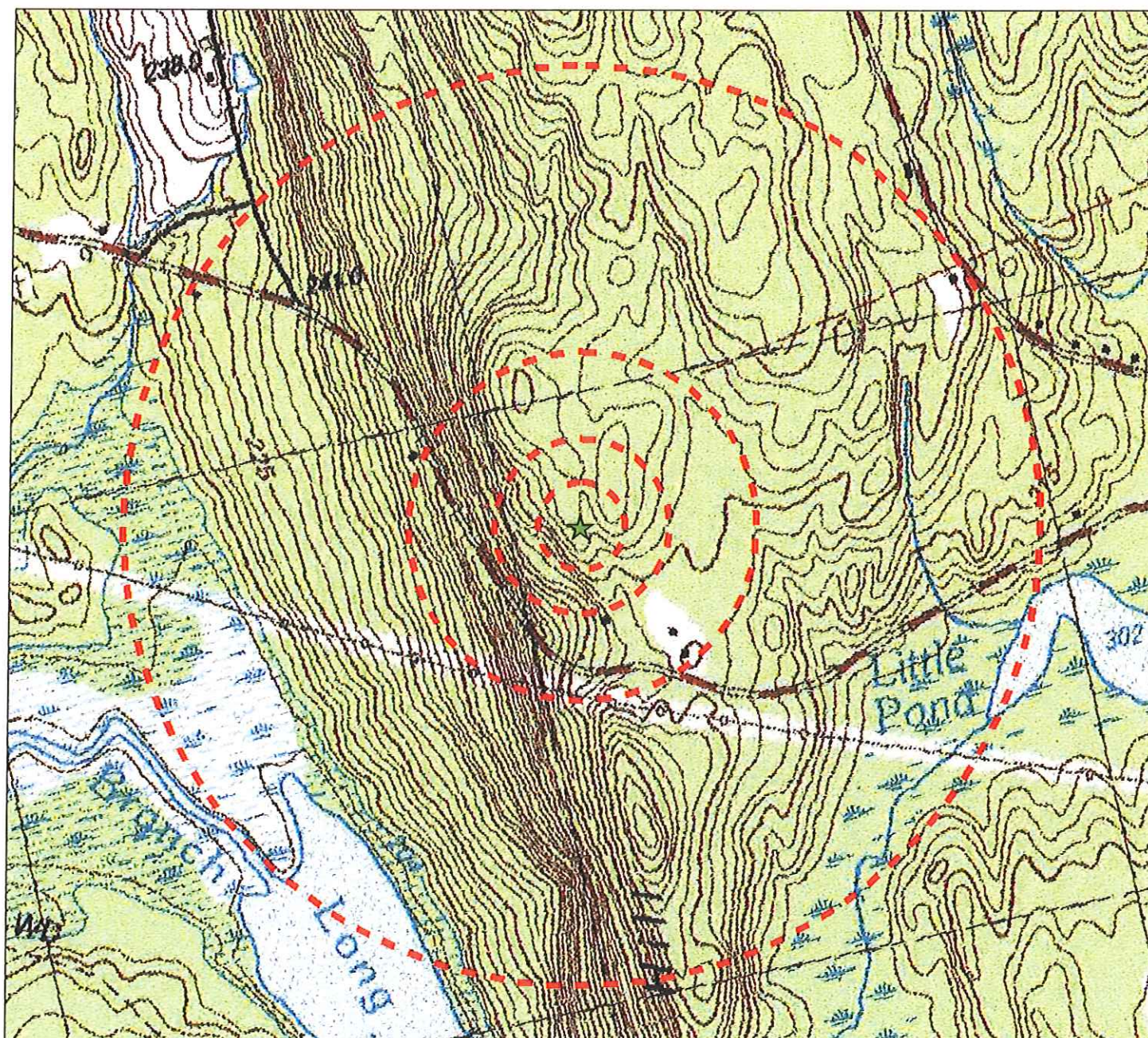
Respectfully Submitted,



Ms. Maureen A. Taylor  
Architectural Historian  
Ph: (781) 418-2325  
[mtaylor@ebiconsulting.com](mailto:mtaylor@ebiconsulting.com)

Attachments – Figures and Drawings





Legend

- ★ Project Site      Site Buffer at 250', 500', 1000' and 1/2 mile

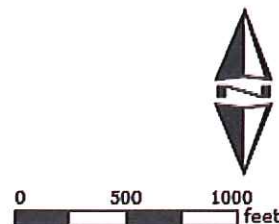
USGS 24k Quad: Royalston, MA 1981

Source: Selected data from ESRI, EBI and USGS

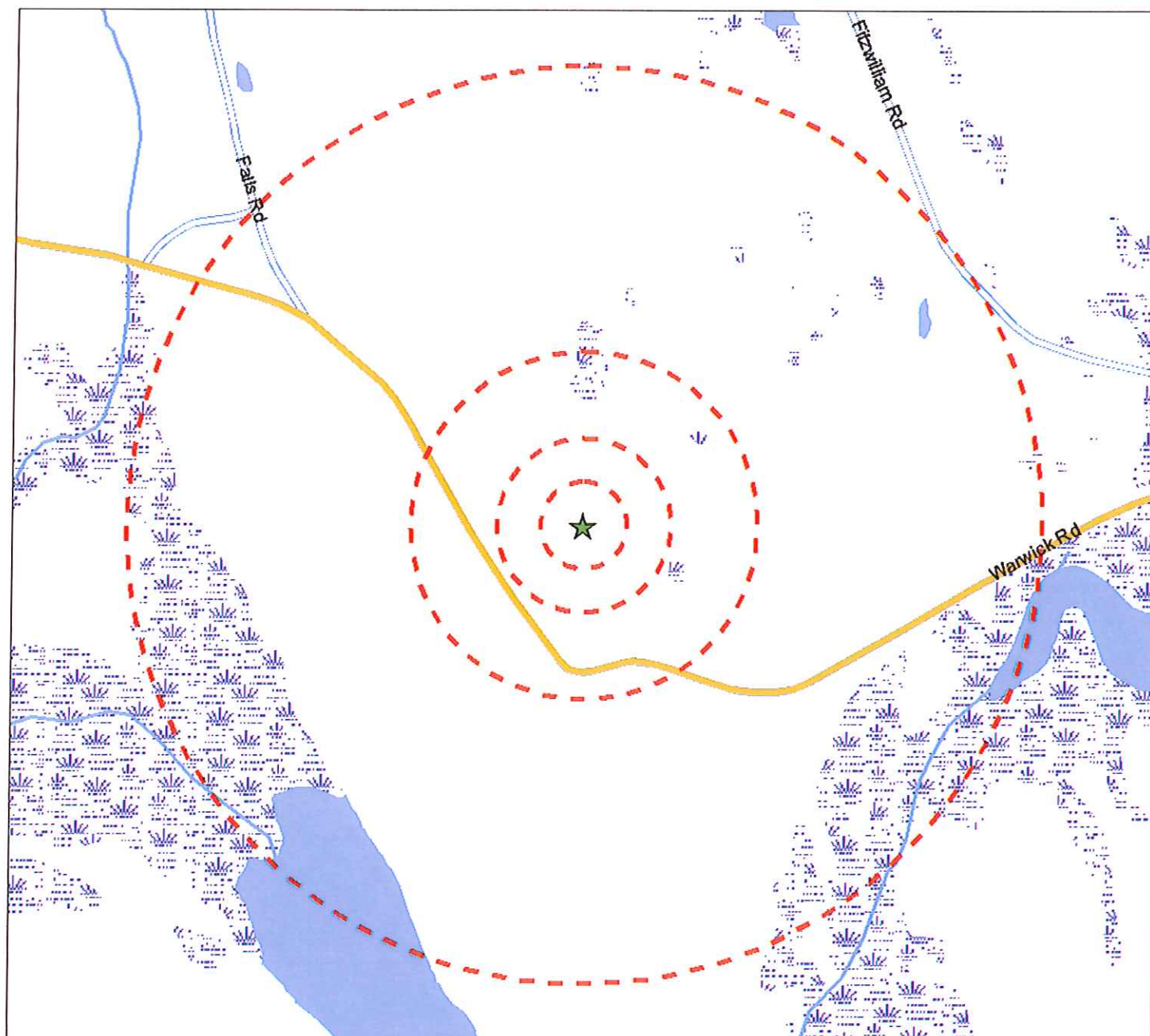
Figure 2 - USGS Quad Location Map

/Royalston  
46 Warwick Road  
Royalston, MA 01368

PN: 61113916







**Legend**

- ★ Project Site      Site Buffer at 250', 500', 1000' and 1/2 mile

Source: Selected data from ESRI, EBI and NWI

Figure 1 - Site Location Map

/Royalston  
46 Warwick Road  
Royalston, MA 01368

PN: 61113916



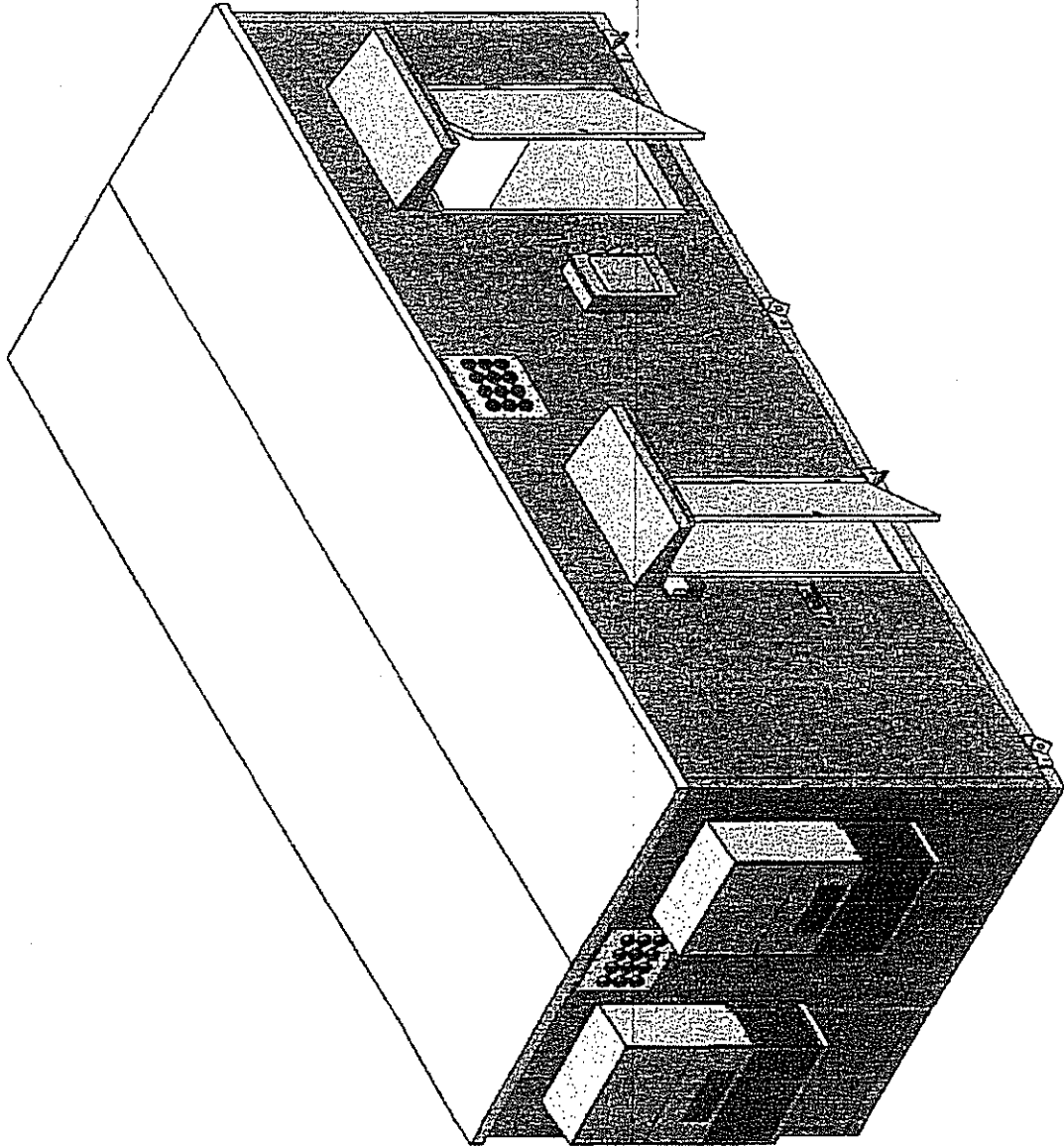
0 500 1000  
feet

- INDEX OF SHEETS  
1 OF 5 COVER SHEET  
2 OF 5 EXTERIOR ELEVATION "A"  
3 OF 5 EXTERIOR ELEVATION "C"  
4 OF 5 EXTERIOR ELEVATION "B" and "D"  
5 OF 5 FLOOR PLAN
- REFERENCE DRAWINGS  
108-001 6" SLAB FOUNDATION PLAN (FLAT TIE-DOWN)  
108-007 ABBREVIATIONS AND SYMBOLS  
108-015 GENERAL ELECTRICAL NOTES AND LEGEND  
108-016 GENERAL CASTING SPECIFICATIONS  
108-035 CONCRETE SHELTER INTERIOR INSULATION/PANEL INSTALL DETAILS  
108-088 SHELTER LIFTING DETAILS  
108-089 SHELTER LOADING DETAILS

- DESIGN PARAMETERS  
USE GROUP: B (BOCA, MASBC)  
S-2 (FBC, IBC, SBC, UBC)  
U (IBC)  
IV-UNP (SBC)  
V-B (IBC, FBC)  
V-N (UBC)
- CONSTRUCTION TYPE: 5B (BOCA, MASBC)

- ROOF LIVE LOAD: 112 PSF  
FLOOR LIVE LOAD: 203 PSF  
WIND SPEED: 150 MPH/EXPOSURE C  
SEISMIC ZONE FOR SBC and UBC: 4  
SEISMIC DESIGN CATEGORY FOR IBC, E (IBC)  
USE GROUP-III (IBC)  
SITE CLASS-D (IBC)

- PHYSICAL PROPERTIES  
SHELTER DIMENSIONS: 11'-8"W X 26'-0"L  
SHIPPING DIMENSIONS: 11'-11"W X 27'-6"L  
SHELTER ESTIMATED WEIGHT: 65029# (SHELTER ONLY)



ENGINEER SEAL

THIS DRAWING IS THE CONFIDENTIAL PROPERTY AND CONTAINS TRADE SECRETS OF CELLIXION, LLC. ANY USE OF THESE DRAWINGS OR THE INFORMATION CONTAINED HEREIN FOR ANY REASON OTHER THAN AS EXPRESSLY AUTHORIZED BY CELLIXION, LLC IS STRICTLY PROHIBITED. THIS DRAWING HAS BEEN DISTRIBUTED WITH THE UNDERSTANDING THAT ANYONE RECEIVING OR OTHERWISE OBTAINING POSSESSION OF IT WILL BE EXPRESSLY NOTIFIED OF ITS CONFIDENTIAL NATURE.

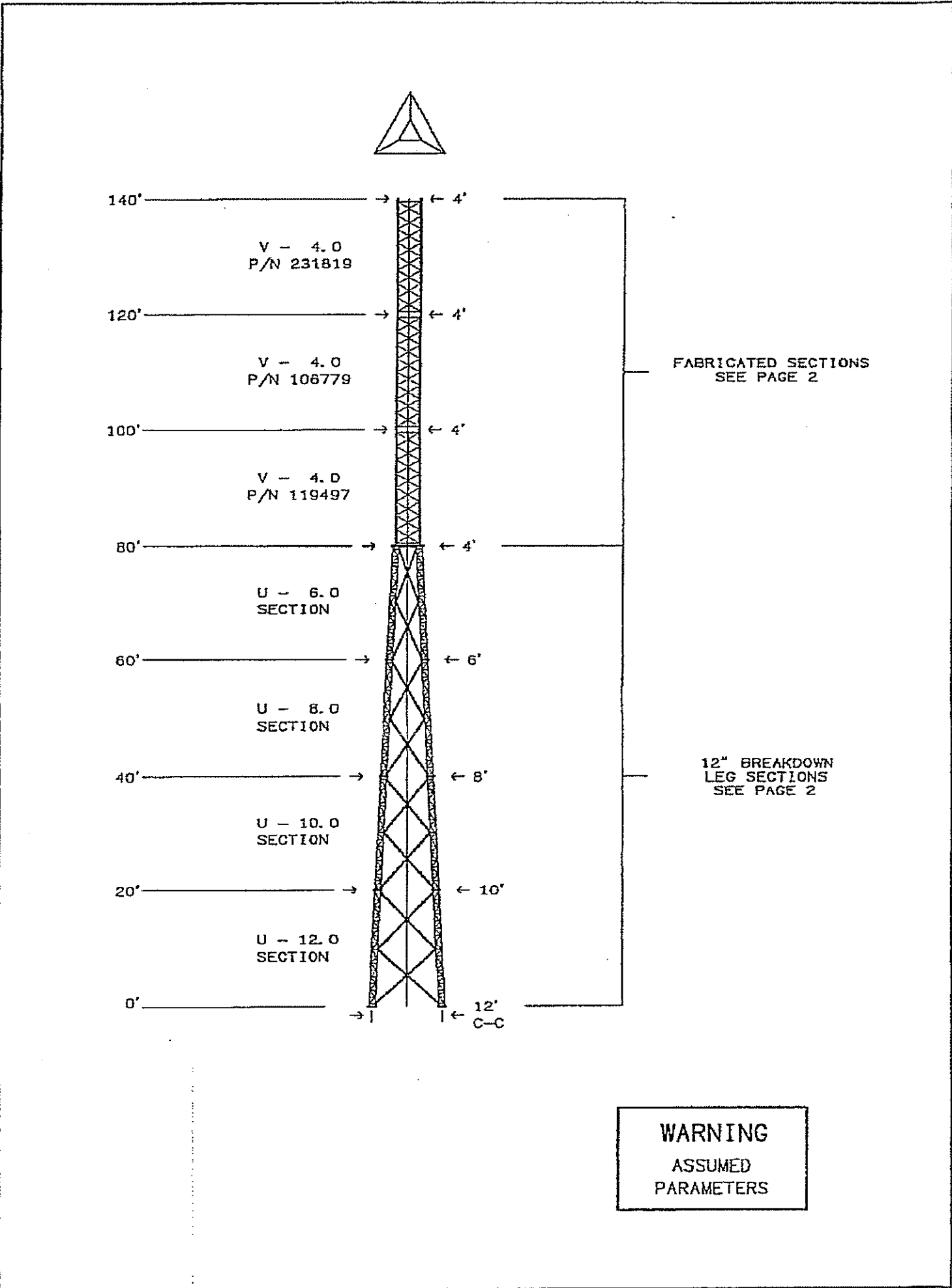
**Cellixion**  
A Division of Sabre Industries, Inc.  
5031 Hazel Jones Road  
Bossier City, LA 70111  
Voice: 318-213-2900  
Fax: 318-213-2919  
www.cellixon.com

CUSTOMER:  
**BELIVEAU COMMUNICATIONS  
& CONSULTING**

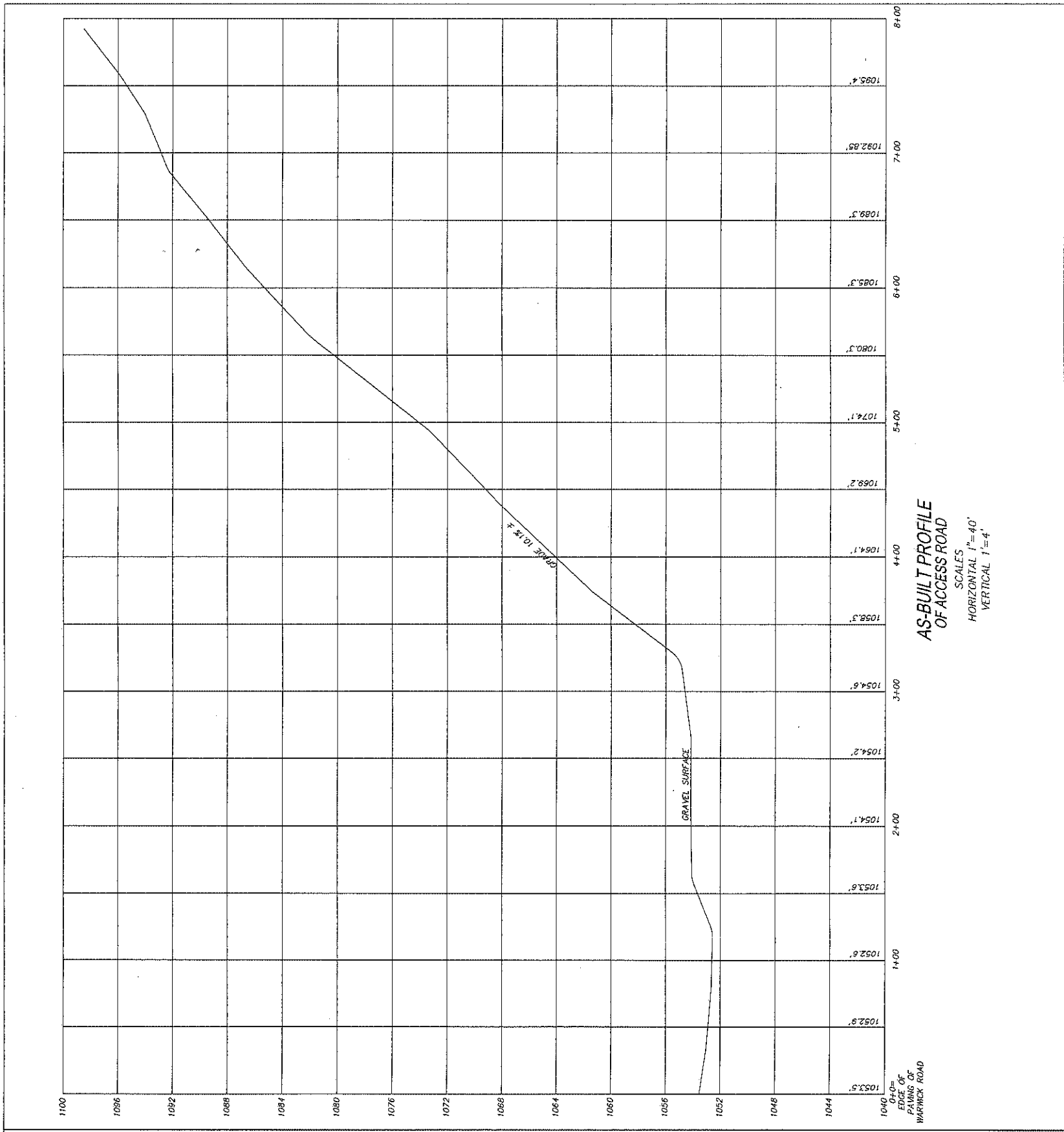
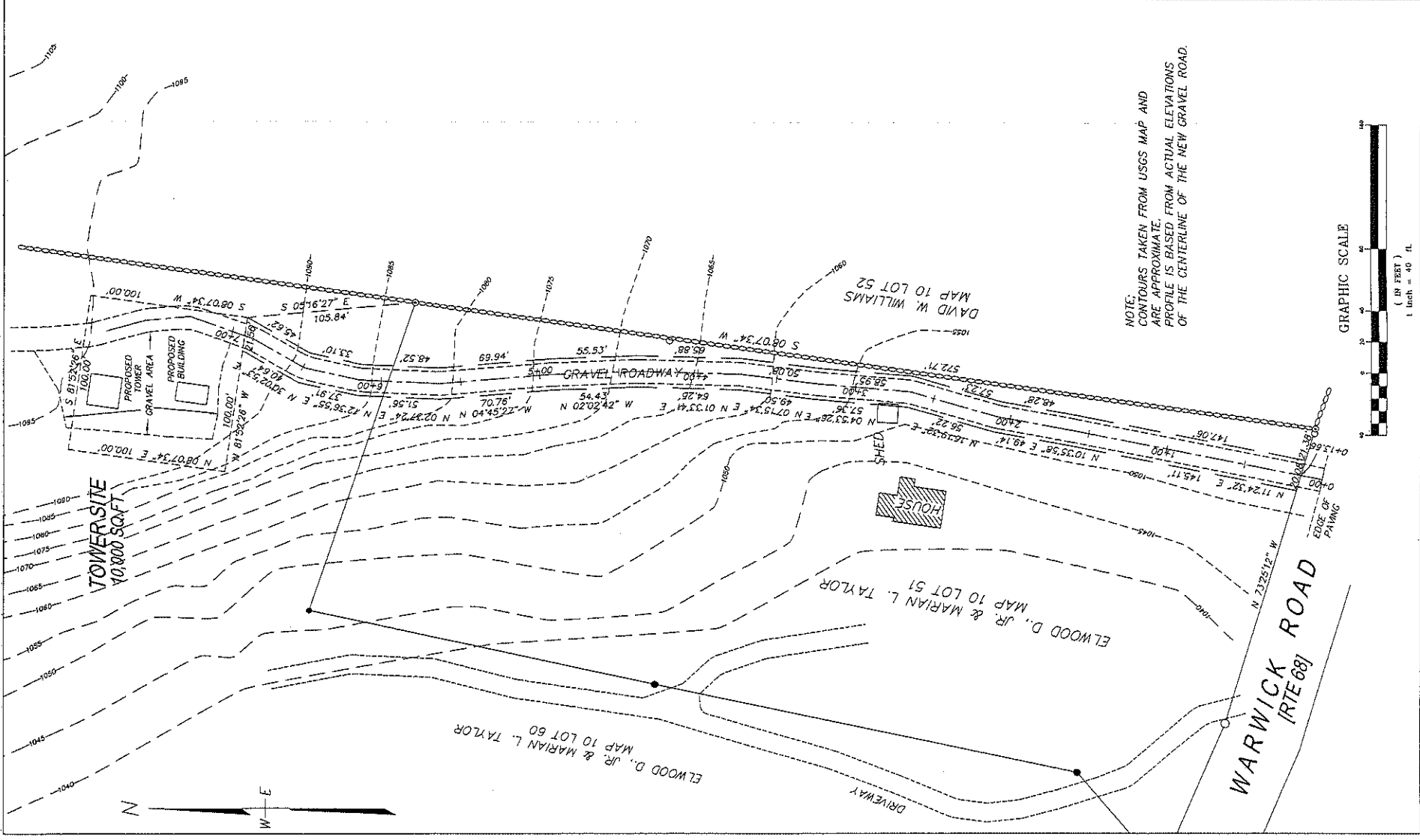
PROJECT:  
**11'-8"W X 26'-0"L  
CONCRETE SHELTER  
COVER SHEET**

FILE NAME:	DATE:
LOCATION:	DATE:
DESIGN BY:	DATE:
A-MENDOTA	11/27/2011
BRUNNUTI	DATE:
A-MENDOTA	11/27/2011
CHECKED BY:	DATE:
LOORDOZ	11/27/2011
ENGINEERED BY:	DATE:
APPROVED BY:	DATE:

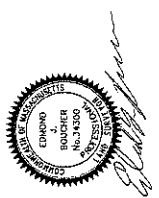
SHEET NO.: <b>1 OF 5</b>	REVISIONS
DRAWING TITLE: <b>SLD008</b>	



				BELIVEAU COMMUNICATIONS ROYALSTON, MA U-12 X 140'			
A	CREATE NEW DRAWING	SKK	11/07/2011	APPROVED/ENG.	SKK	11/7/2011	<b>valmont</b> 1425-157-013 P/N 10101 1425-157-013 10101 STRUCTURES
REV	DESCRIPTION OF REVISIONS	INI	DATE	APPROVED/FOUND.	N/A		
				COPYRIGHT 2011			
				DRAWN BY	SKK		DRAWING NO.
From F1014106.DFT - 11/07/2011 10:07				ENG. FILE NO. A-161242-		239611	
Printed from 239611_010A.DWG - 11/07/2011 10:08 @ 11/08/2011 08:44				ARCHIVE F-1014106		PAGE	1 OF 8



SITE PLAN  
PREPARED FOR  
**ELWOOD D. TAYLOR, JR.**  
**ROYALSTON, MA**  
SCALE 1 INCH = 40 FEET  
EDMOND J. BOUCHER, PLS., 4 JOLLY ROAD, ROYALSTON, MA, 01568  
JCB NO. H-184 TEL. 978-249-6685, FAX 978-249-4517  
DECEMBER 14, 2011



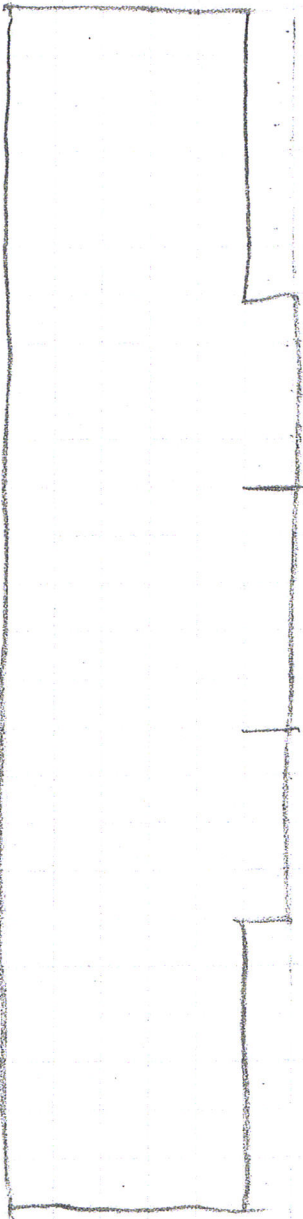
## Plant Schedule

- 5 (A) Globe  
Arbovitae (*Thuja Occidentalis Globosa*)  
Mature size: 4'x8'
- 5 (R) Smirnow  
Rhododendron (*Rhododendron smirnowii*)  
Mature size: 5'x6'
- (or)
- (R) Rosebay  
Rhododendron (*Rhododendron maximum* v. Mt  
Mitchell or Prides Peak)  
Mature Size: 6'x6'
- (or)
- (R) PJM  
Rhododendron x Olga Mezitt (or) Aglo  
Mature Size: 4'x5'
- 2 (V) Dwarf Jap. Yew (*Taxus cuspidata* v. nana)  
Mature Size: 4'x4'

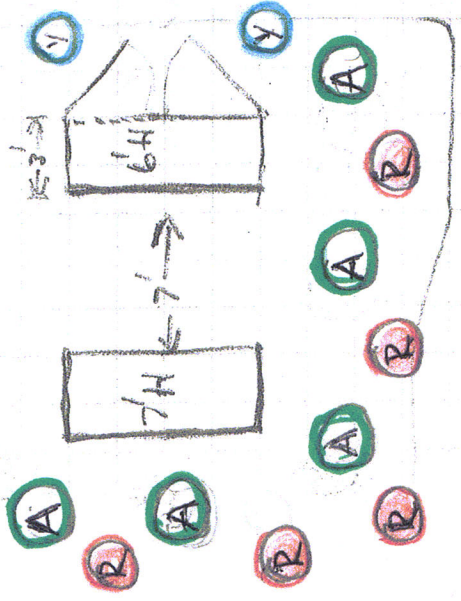
Average cost per plant = \$50

12 plants x \$50 = \$600.





pine tree  
grove



parking

Parking?

Utility Screening Plan  
Regulation Fire Hall

(not to scale)